

Topic: Taxus ; Seed Development
B.Sc. Botany Hons. II
Paper: III Group: A

Dr. Sanjeev Kumar Vidyarthi

Department of Botany

Dr. L.K.V.D. College, Tajpur, Samastipur

L.N. Mithila University, Darbhanga

Seed Development of Taxus

- *Taxus* seeds are covered by a three-layered seed coat.
- The outermost layer is thin, brown and detaches soon.
- The middle layer is hard and stony while the innermost layer is fleshy.
- The mature seeds are covered by a red coloured aril. The aril serves to attract birds and help in dissemination.
- The germination of seed is hypogeal.
- The seed germinates into a seedling possessing two cotyledonary leaves.
- The foliage leaves arise in the coming year.
- The cotyledonary leaves are larger than the normal foliage leaves.

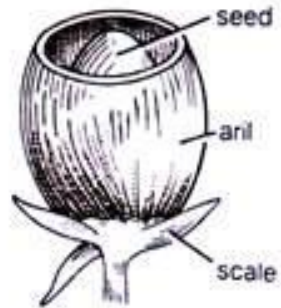


Fig. 12.20. A seed of *Taxus* enclosed by aril (after Strasburger).



Fig. 12.21. *Taxus baccata*, L.S. mature seed.